

Security around the clock: brand quality movement detectors.

Secure. Convenient. Energy-efficient.



Schneider
Electric



Outdoor movement detector Standard 120



Outdoor movement detector Standard 360



Indoor movement detector Standard 360

Movement detectors from Schneider Electric

Secure. Convenient. Energy-efficient!

Do you value security and convenience in your home? Would you like to save energy too? Then Schneider Electric's brand quality movement detectors are just the right solution for you, for both outside and inside your house.

Clever technology: the movement detectors register every moving heat source via infrared sensors. As soon as someone steps into the monitored area, the lighting switches on automatically. Afterwards it also switches off automatically – whenever you set it to do so. This allows you to profit not only from greater security and convenience, but also from lower energy costs.



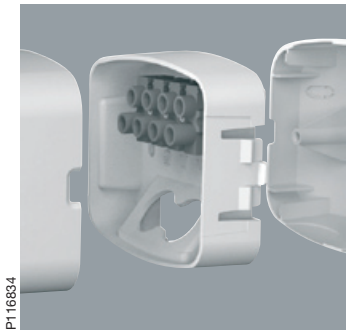
Those who value reliability for outdoor and indoor movement sensors choose Schneider Electric brand quality.

Illuminating arguments



Schneider Electric outdoor movement detectors automatically greet you and your guests with light. They are also vigilant around the clock, leaving you to sleep soundly. On top of that, they also ensure that your outdoor lighting switches on automatically when someone moves into the area of detection. The advantage to you: increased security and protection against unwanted guests.

Brand quality shows through straight away in the following details:



1 Quick to wire, thanks to large wiring compartments and practical cable inlets. Connectors between insert and connection box make installation particularly easy work.



2 The special high resolution lens insures perfect detection quality.



3 Parameters such as switching duration, sensitivity and twilight threshold are easy to adjust to your individual needs.



4 Snap-in segments make it possible to mask individual areas, without changing the appearance.

Security at every turn

- Ideal for automatic lighting in house entrances and paths
- Shows you and your guests the way to the door
- Warns you of uninvited guests
- Flexible installation with a supplied mounting bracket
- Wide range of possible settings
- Saves energy by allowing you to adjust the switching duration, sensitivity and twilight value
- Robust, UV-resistant plastic housing

Technical characteristics

Angle of detection: up to 120°

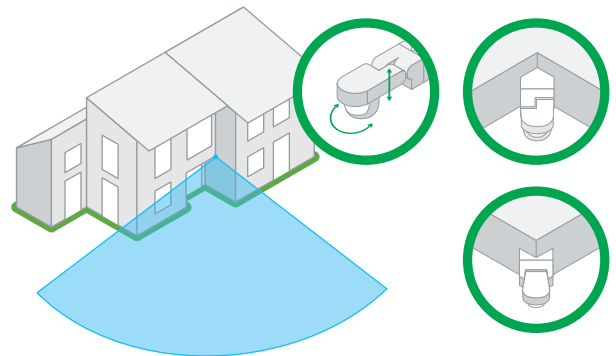
Sensor setting: horizontal and vertical

Range: 3 – 12 m

Light sensitivity: 5 – 2000 lux

Illumination time: 3 s – 30 min

Constant illumination: max. 6 hours



Clever: the supplied mounting bracket for attaching the movement detector to inner and outer corners and the vertical and horizontal setting options for the sensor head.

Your security bonus:

if you don't need a wide area of detection, the Standard 120 outdoor movement detector is exactly the right choice for you.



Your security bonus:
the Standard 360 movement detector offers the advantage of a wide area of detection.

No-one slips by unnoticed

- Ideal for complete, all-round monitoring of buildings
- Shows you and your guests the way to the door
- Warns you of uninvited guests
- Flexible installation on outer corners and the front of the house with the supplied mounting bracket
- Wide range of possible settings
- Saves energy by allowing you to adjust the switching duration, sensitivity and twilight value
- Robust, UV-resistant plastic housing

Technical characteristics

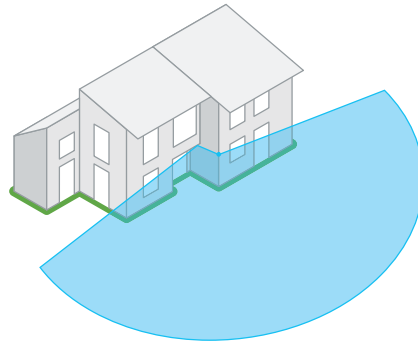
Angle of detection: up to 360°

Range: 8 – 12 m

Light sensitivity: 5 – 2000 lux

Illumination time: 5 s – 20 min

Constant illumination: max. 6 hours



Particularly useful: the supplied mounting bracket.
This allows you to affix the outdoor movement detector without any problems – even on the outer corners of your house.



Standard 360 indoor movement detector

The convenient way to save energy

- Ideal for anyone who wants to save energy
- Switches lighting inside the house on and off automatically
- Convenient for when you don't have a free hand to operate the light switch (e.g. when carrying your shopping or the washing basket)
- Wide range of possible settings
- Simple ceiling mounting in staircases, corridors and other interior spaces

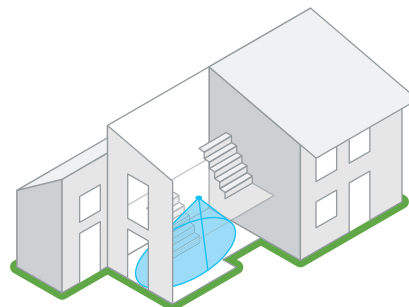
Technical characteristics

Angle of detection: up to 360°

Range: 7.40 m at a mounting height of 2.40 m

Light sensitivity: 5 – 2000 lux

Illumination time: 3 s – 10 min



The bonus for you and the environment: with the Standard 360 indoor movement detector, you can reduce your energy costs with lighting control tailored to your needs – and you'll be saving valuable resources too.

Schneider Electric Industries SAS

35 rue Joseph Monier
92500 Rueil-Malmaison
France
www.schneider-electric.com

As standards, specifications and designs change from time to time, please ask for confirmation of the information given in this publication.



*This document has been printed
on ecological paper*

Publishing: Schneider Electric Industries SAS

Design:

Illustrations:

Photos:

Printing: